

HOME & BUSINESS

Display a page in new window

How to display a new window in
MS Internet Explorer

Telkom

MS Internet Explorer

Display a web page in a new window

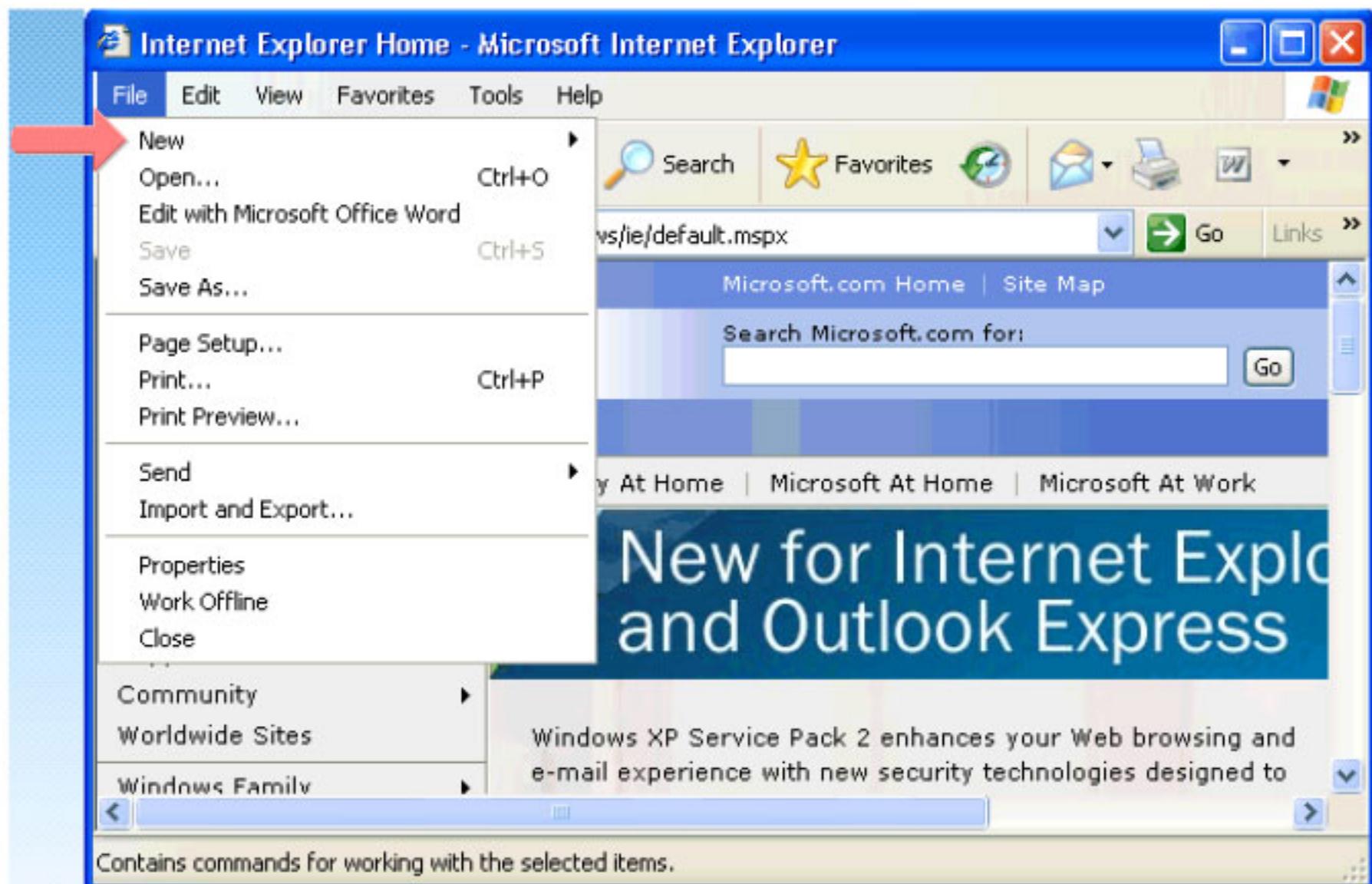
Step 1 of 4:

Click on the "File" drop-down menu.



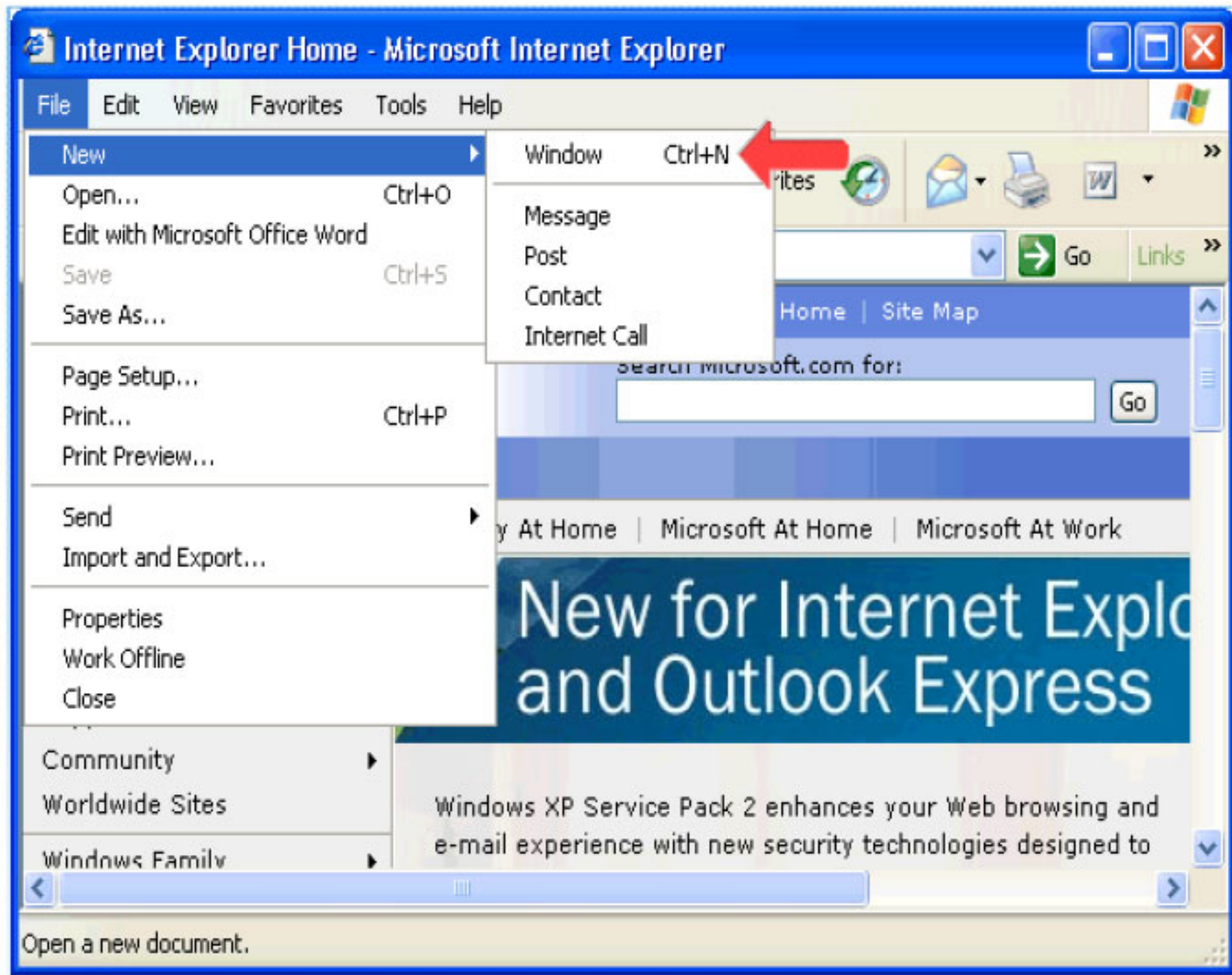
Step 2 of 4:

Click on "New".



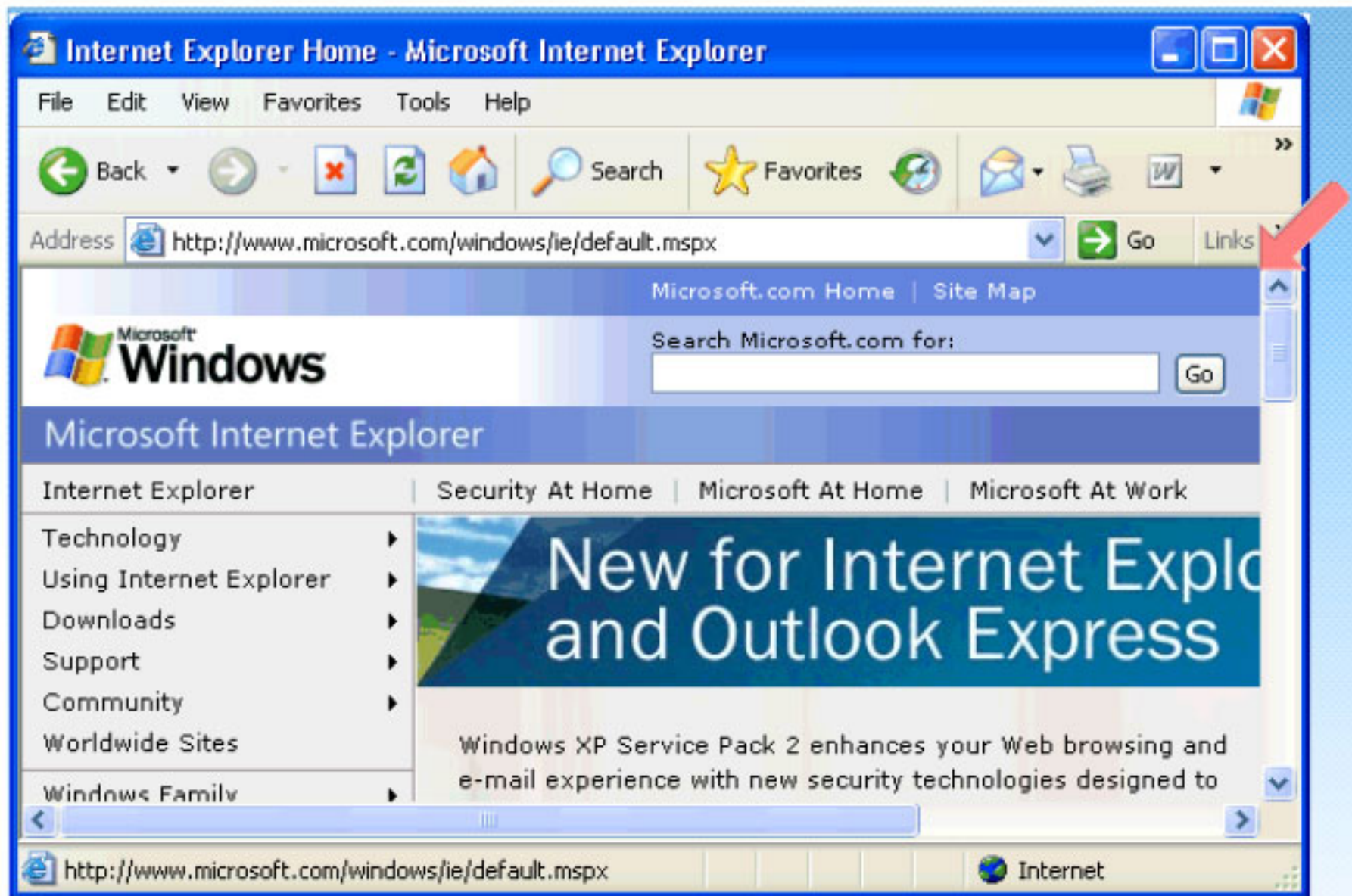
Step 3 of 4:

Click on "Window", alternatively you can press "Ctrl" and "N" simultaneously on your keyboard.



Step 4 of 4:

A new window will open displaying the current website.



MS Internet Explorer

Display a bookmarked web page

Step 1 of 3:

Click on the "Favourites" drop-down toolbar.

