

HOME & BUSINESS

How to FTP

How to set up File Transfer
Protocol on your PC

Telkom

How to FTP

Overview

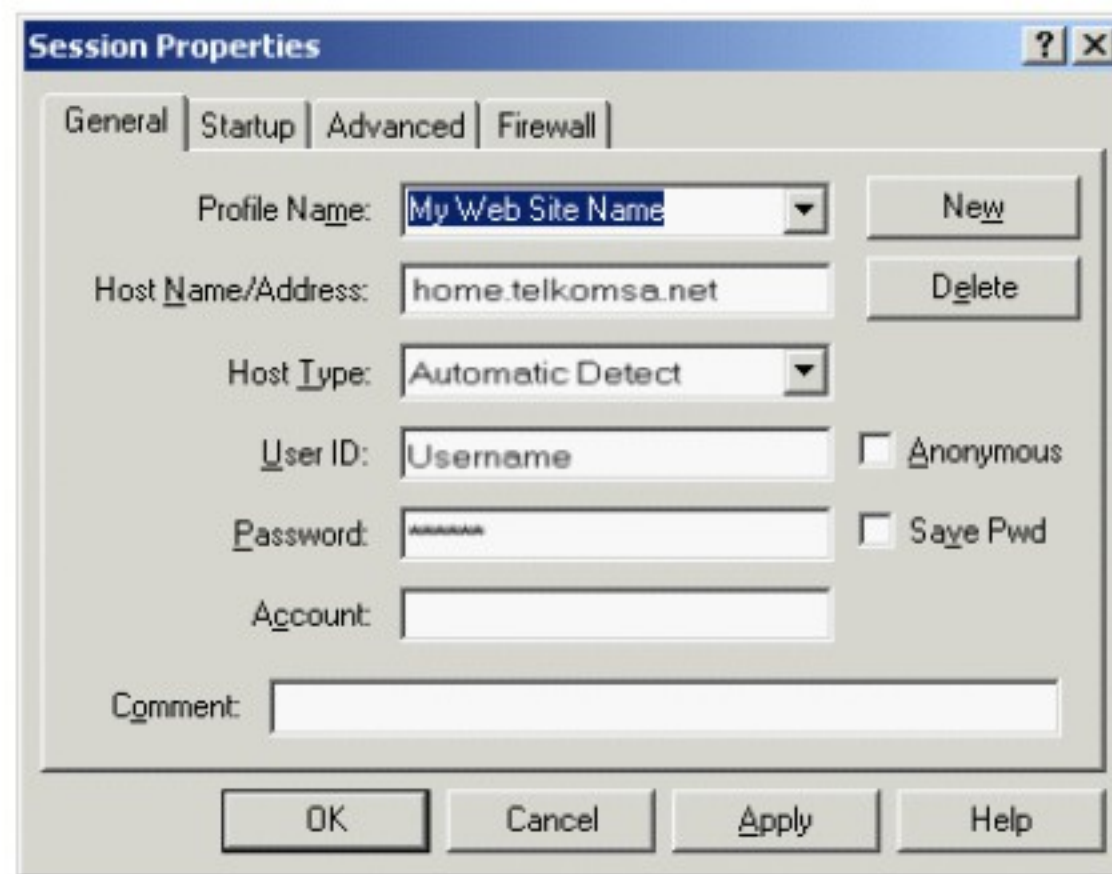
FTP – File Transfer Protocol is a method of transferring files from and to an FTP server. In most cases used for uploading files your personal webspace.

There are a couple of FTP clients that can be used for this process. We examples of two below. Choose the one you are going to use, to see a brief tutorial.

WS_FTP_LE

The first time that you run WS_FTP_LE after installation, it will prompt you for certain details. Complete the details as show in the image below. You can also get this box by clicking on Connect and then New Connection once you are in program.

The details required are: Profile, Host, Username and Password. Profile can be the name of your website eg. My Website's name. Host is the FTP server you want to connect to, in a case where you want to upload files to your personal webspace the host will be home.Telkom.com. Username and Password will be the same that Telkom supplied you.

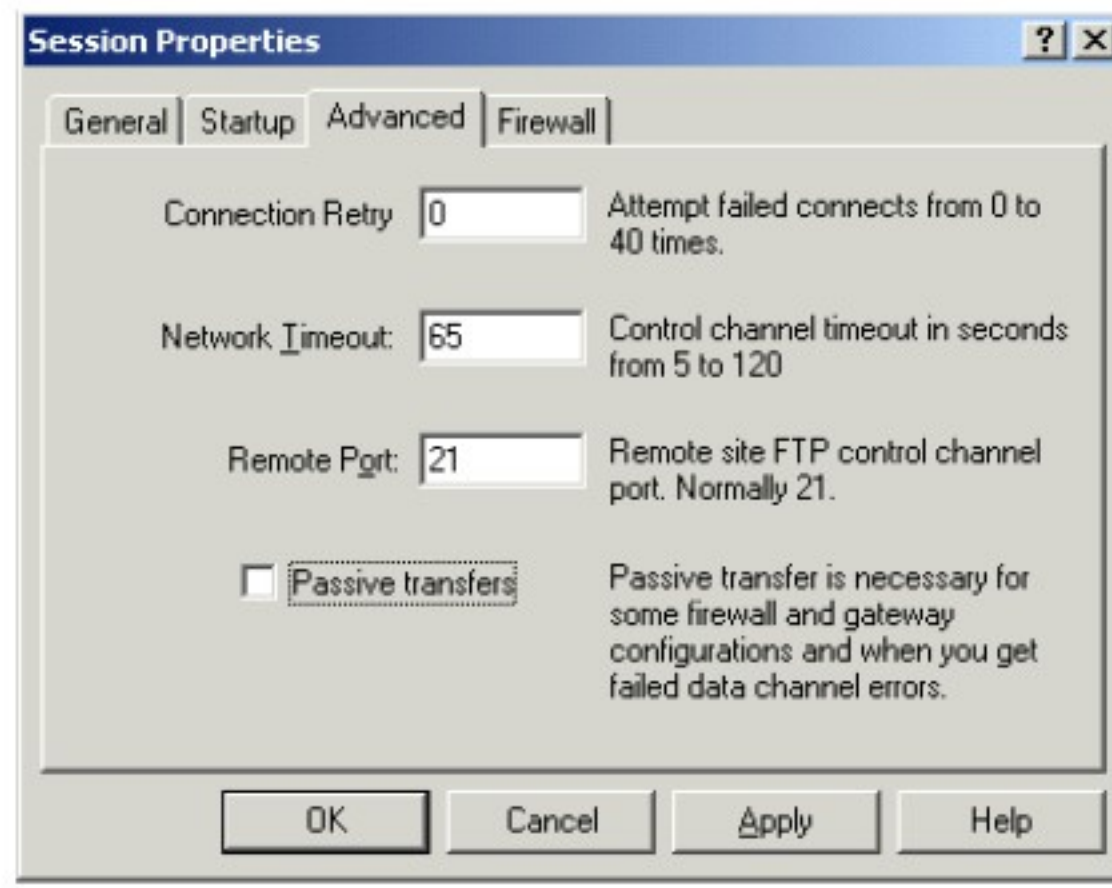


The image shows a screenshot of the 'Session Properties' dialog box in WS_FTP_LE. The 'General' tab is selected. The fields are filled with the following information:

- Profile Name: My Web Site Name (dropdown menu)
- Host Name/Address: home.telkomsa.net
- Host Type: Automatic Detect (dropdown menu)
- User ID: Username
- Password: [REDACTED]
- Account: [REDACTED]
- Comment: [REDACTED]

Buttons: New, Delete, OK, Cancel, Apply, Help. Checkboxes: Anonymous (unchecked), Save Pwd (unchecked).

Once all the required details has been completed, Click on the Advanced tab at the top and make sure that Passive transfers is not selected.



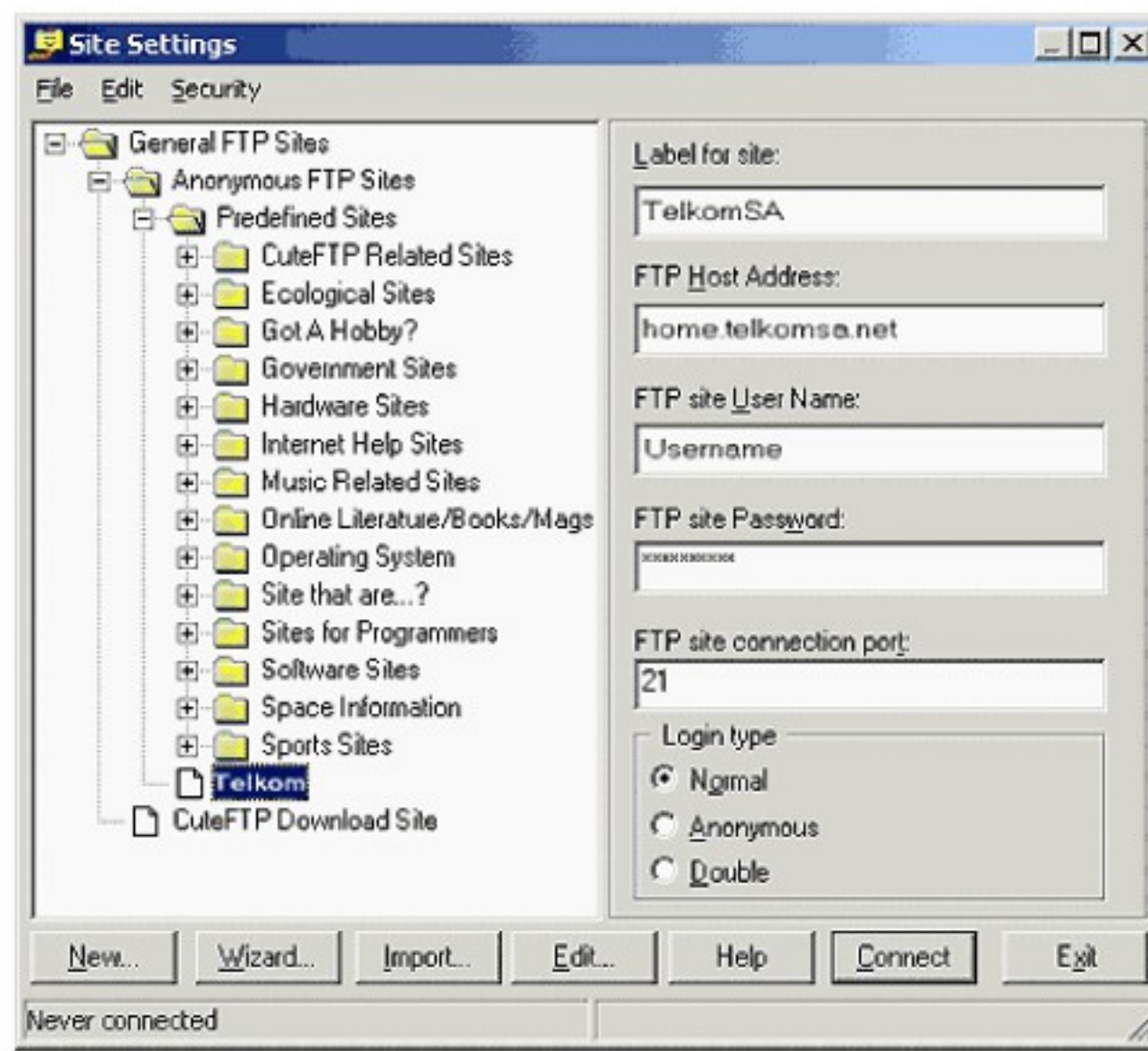
Once you have reached this step you are ready to start transferring files. WS_FTP_LE is very easy to use. On left hand side you have your local system and on the right hand side you have the remote system that you are connected to.

To upload a file simply select the file by clicking on it and then pressing the right arrow button, this will upload the file. To download a file you need to select the file on the left hand side and press the left arrow button.

CUTE FTP

Once Cute FTP is open, click on File and the Site Manager. In the Site Manager click on the New button at the bottom. In the Right hand side pane complete all the required fields. Label for site can be Telkom or your website's name.

FTP Host Address will be the remote server that you are connecting to, if in the case of uploading files to your personal webspace the host will be home.Telkom.com. FTP site Username and Password will be your Telkom username and password. FTP port connection must be set to 21.



Once you have reached this step you are ready to start transferring files. Cute FTP is very easy to use. On left hand side you have your local system and on the right hand side you have the remote system that you are connected to.

To upload or download file, you simply need to select the files and drag them to where you want them.