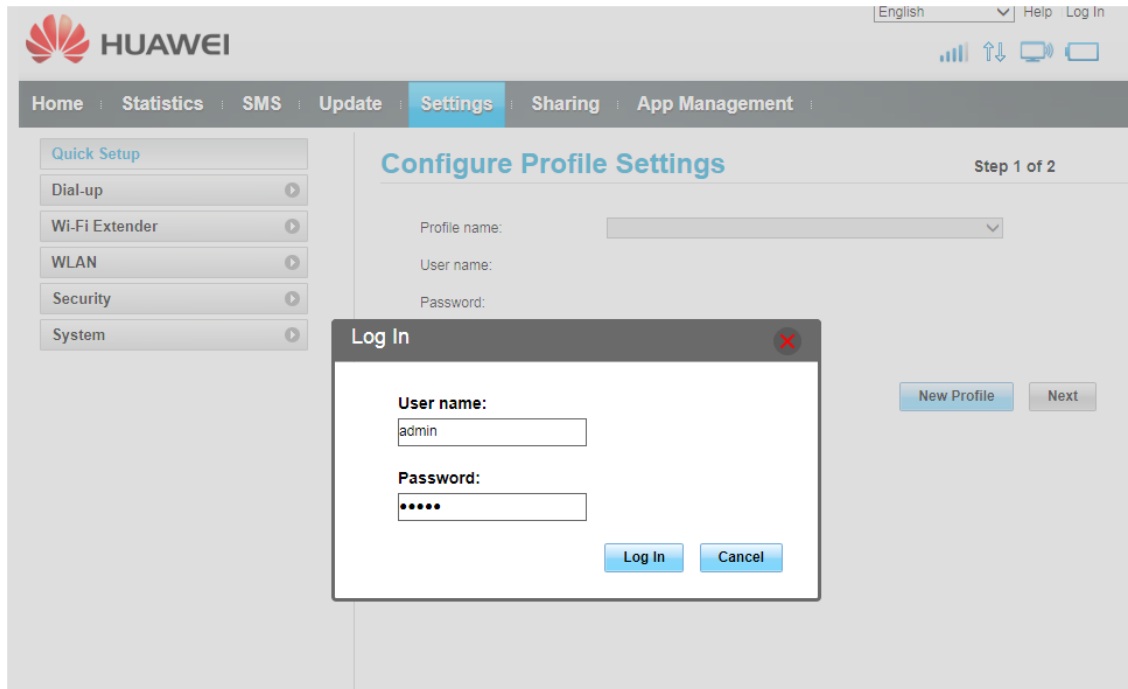
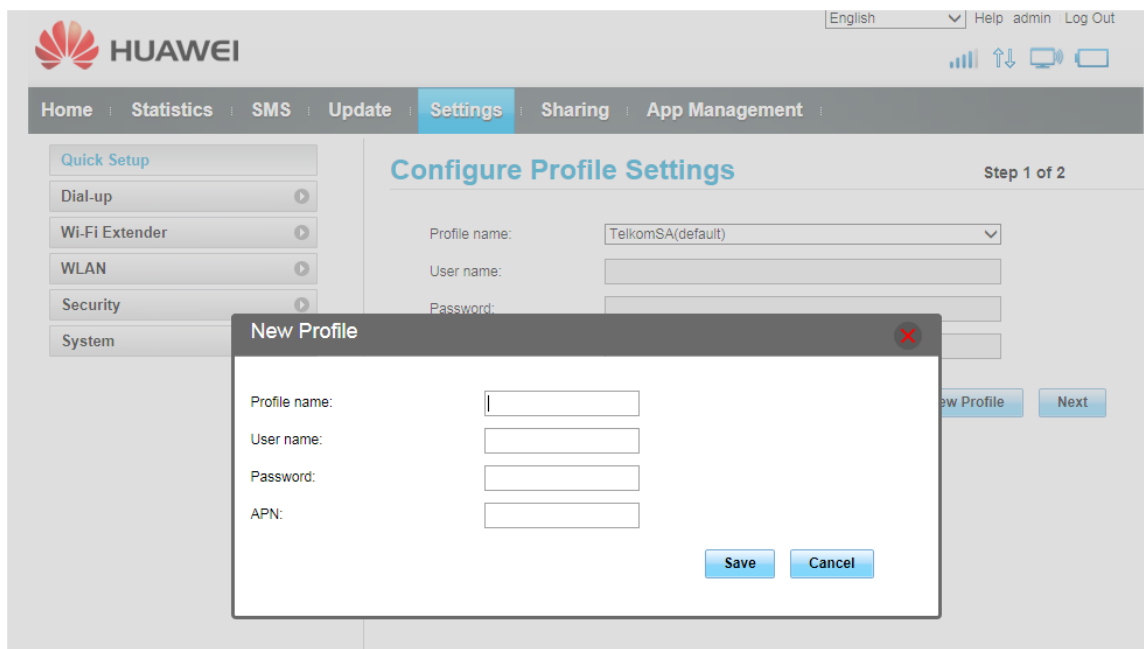


# Huawei E5577

1. Type 192.168.8.1 on the web browser



2. Type "admin" in both the user name and password and click "Log In"
3. Select new Profile



4. Type "TelkomInternet" on both the Profile name and APN, Save and Next

English Help admin Log Out

**HUAWEI**

Home Statistics SMS Update Settings Sharing App Management

Quick Setup

Dial-up

Wi-Fi Extender

WLAN

Security

System

### Configure WLAN Settings

Step 2 of 2

**Name SSID (Service Set Identifier):** Enter a character string, of up to 32 characters in length, as the name for your wireless local area network (WLAN).

SSID:

WPA pre-shared key:

Back Finish

5. Click on "Finish"