

HOME & BUSINESS

PC Setup for Linux (Ubuntu)

How to setup your ADSL on
a Linux pc.

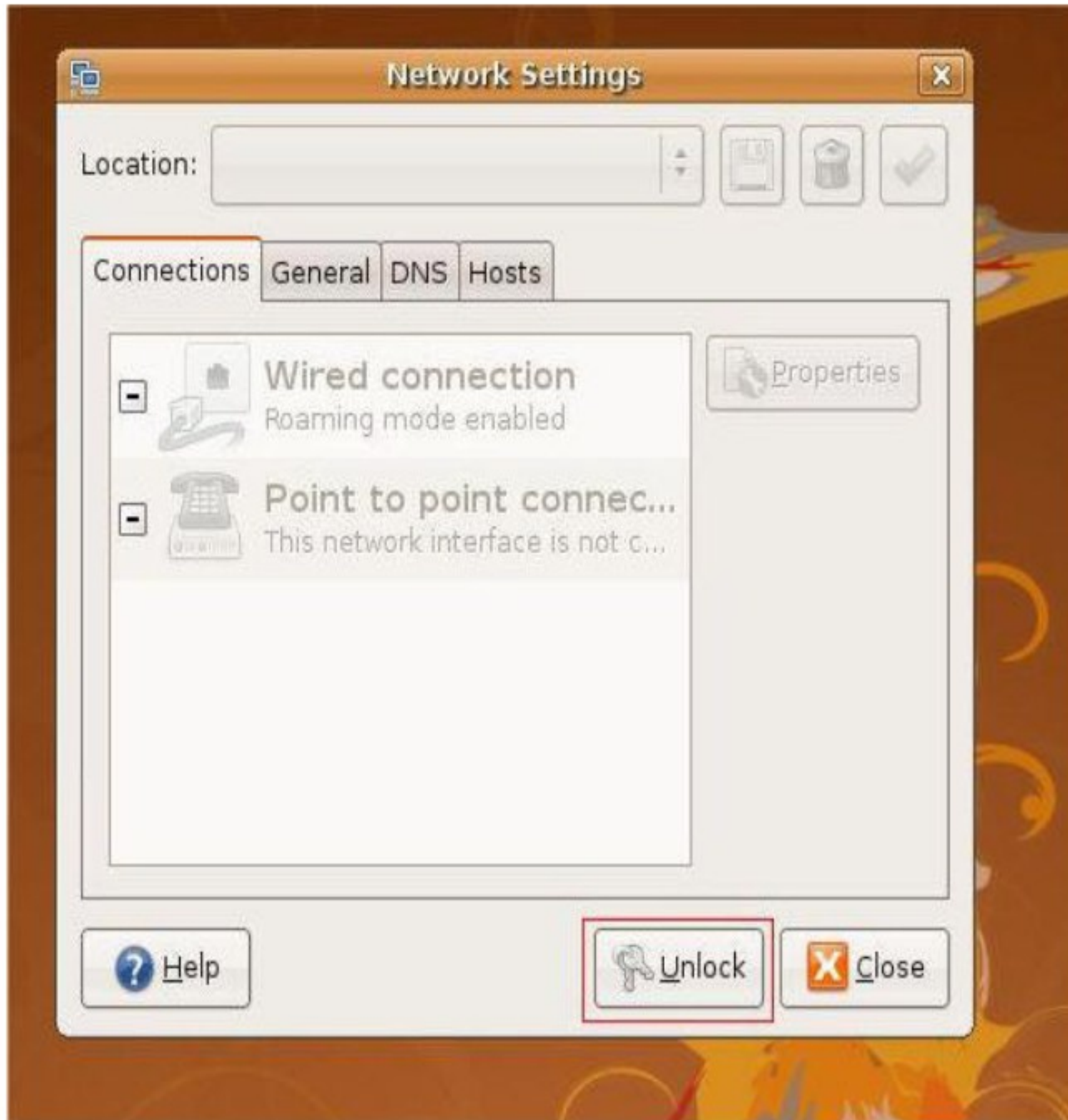
Telkom

Pc Setup for Linux (Ubuntu)

- 1. Select **System** --> **Administration** --> **Network** in your panel.



- 2. Please click **Unlock** button in Network Settings window.



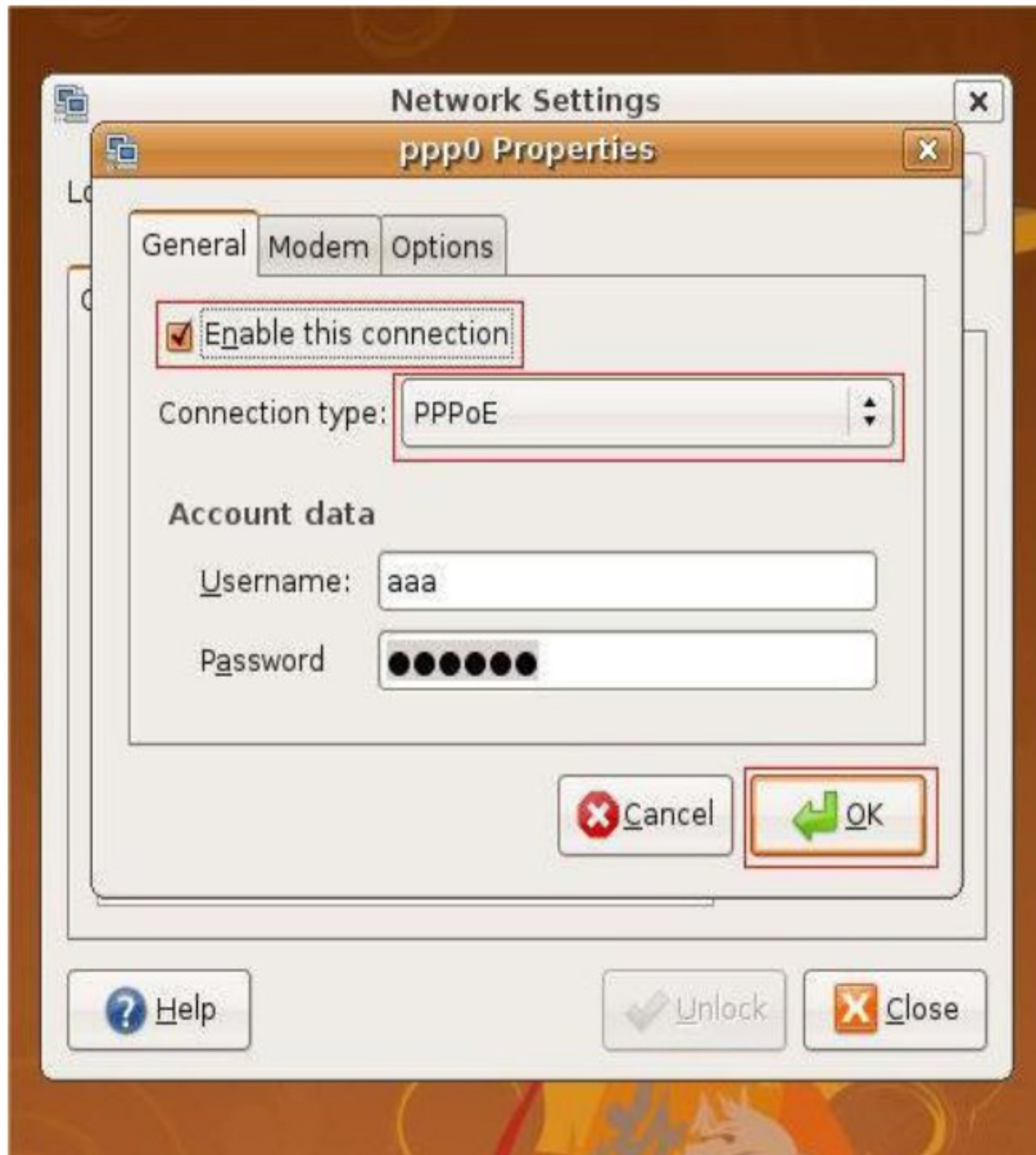
- 3. You need to click Authenticate button when the Authenticate window pop-up.



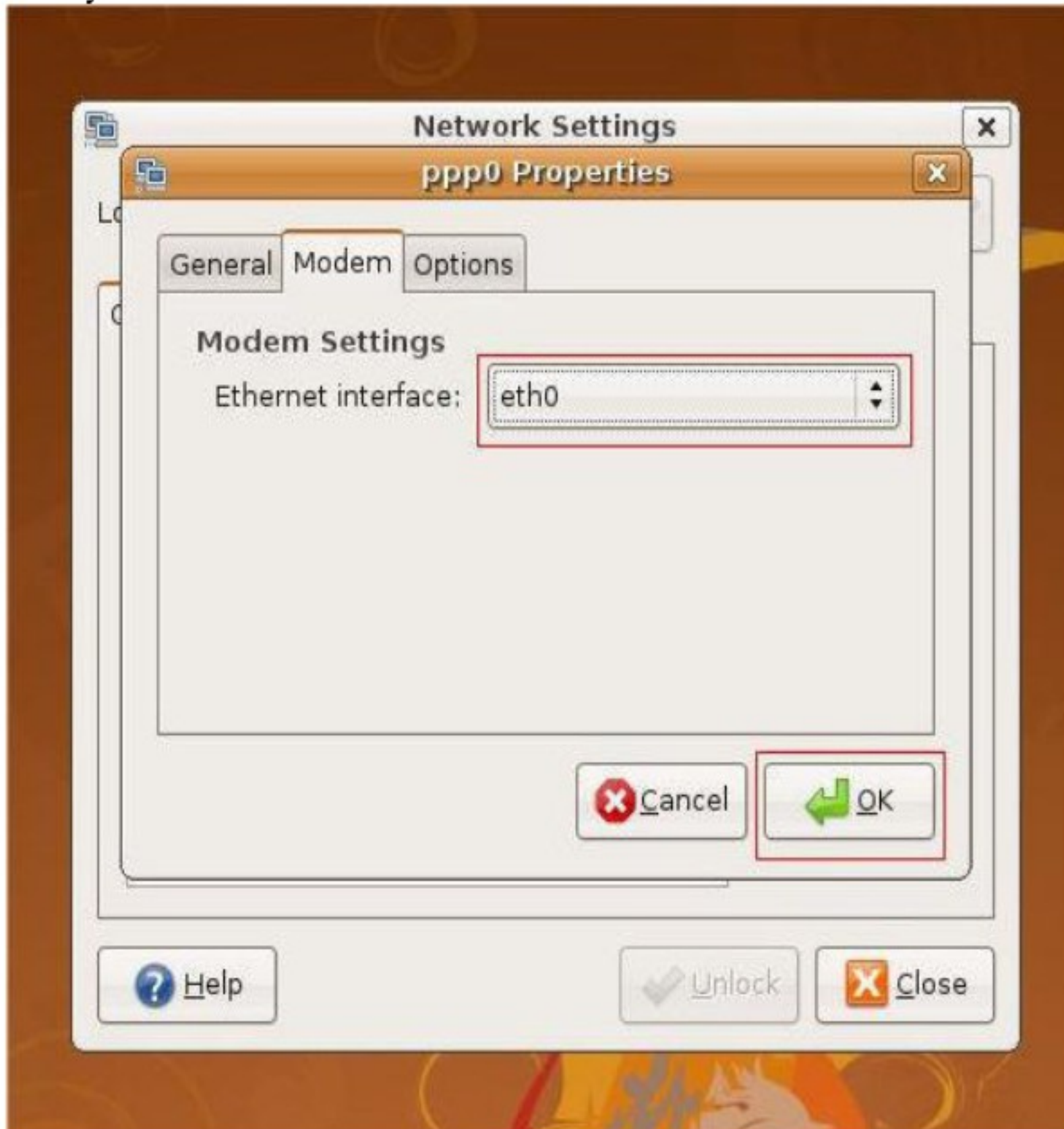
- 4. You can click properties now.



- 5. Please fill your Username and Password after enable this connection and change connection type to PPPoE in **General** option.



- 6. You need to make sure what interface do you use before select Modem option and modify **Ethernet interface** table.



- 7. Please check your network connection status after click **Ok** button. It shows in panel.

