

HOME & BUSINESS

Using the search engine

How to use Google search engine
on MS Internet Explorer

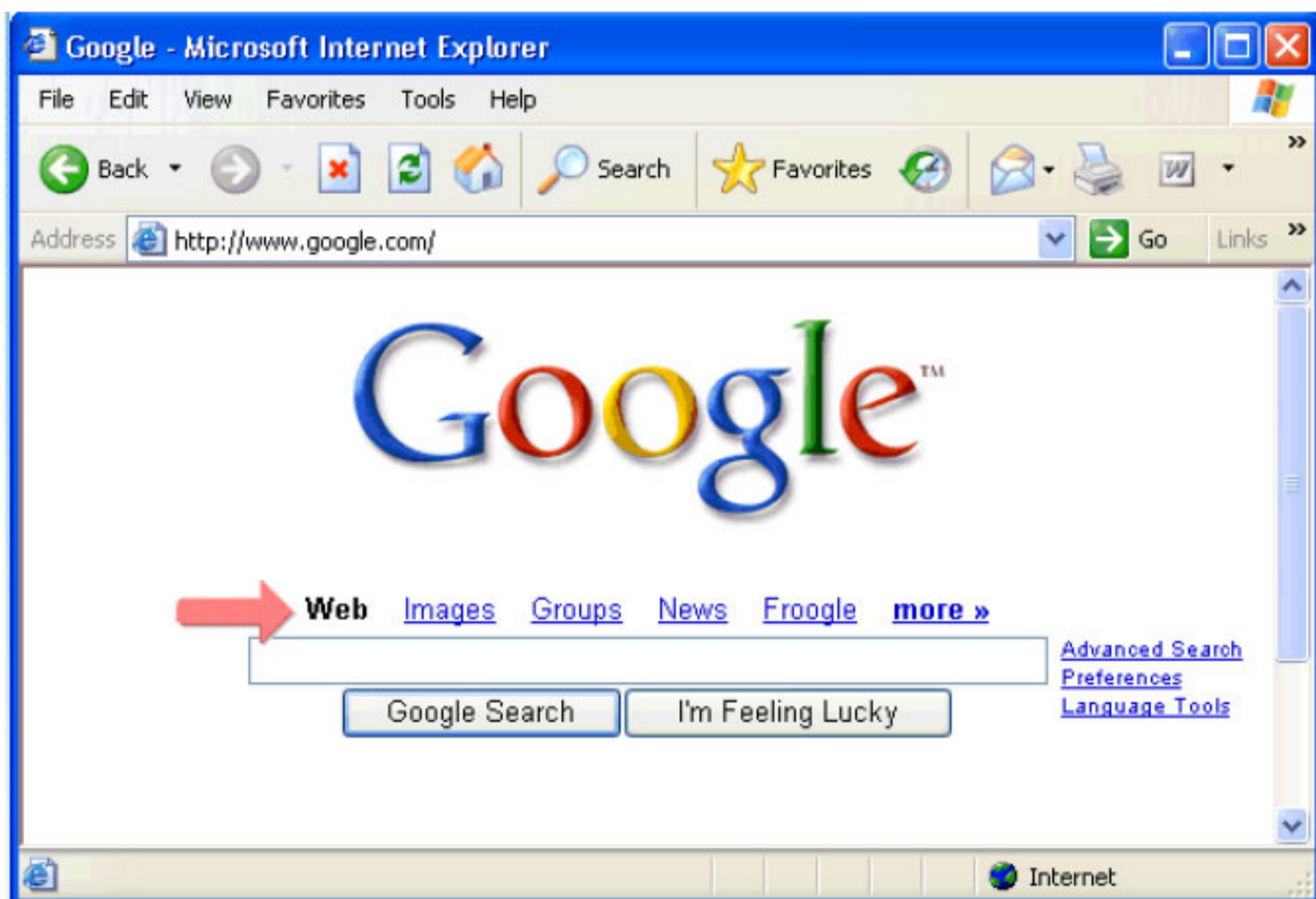
Telkom

MS Internet Explorer

Using the search engine

Step 1 of 5:

Here you can select if you would like to search for a website or a image etc.



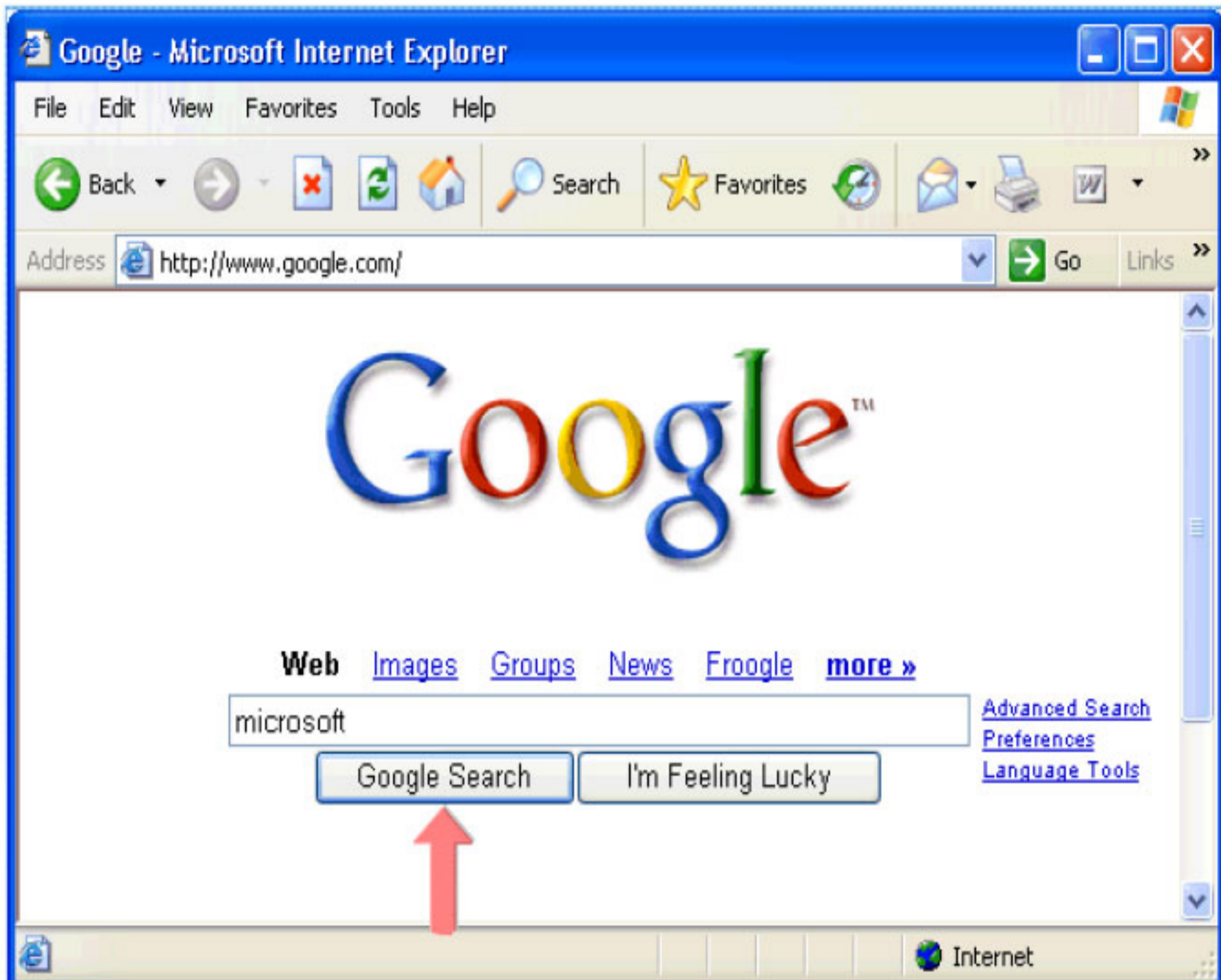
Step 2 of 5:

Enter a topic to search. For this example enter "Microsoft".



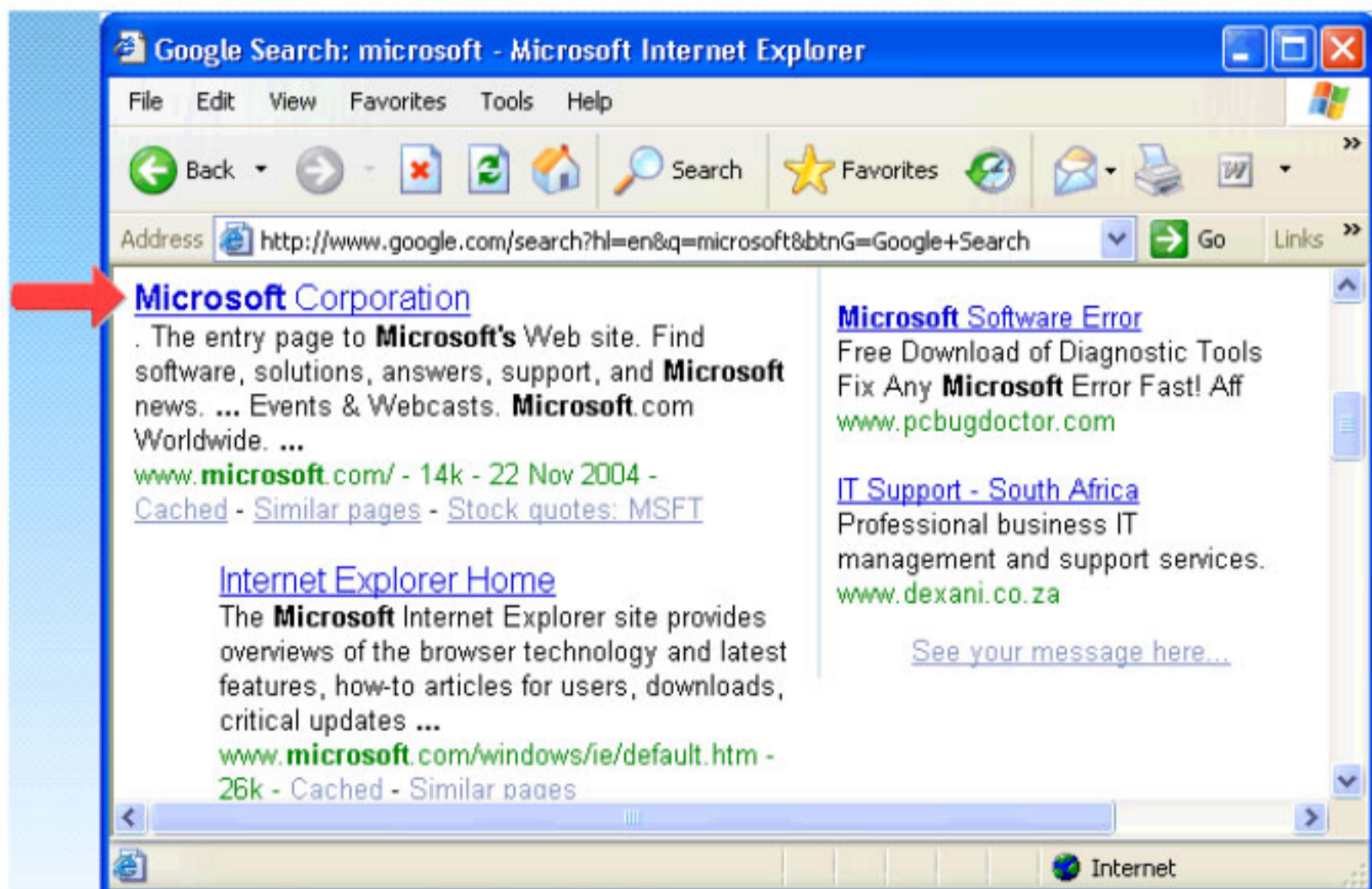
Step 3 of 5:

Click on "Google Search".



Step 4 of 5:

The results will be displayed.
Click on the desired link to open the website.
For this example click on "Microsoft Corporation".



Step 5 of 5:

The website will now be displayed.

