

PERSONAL

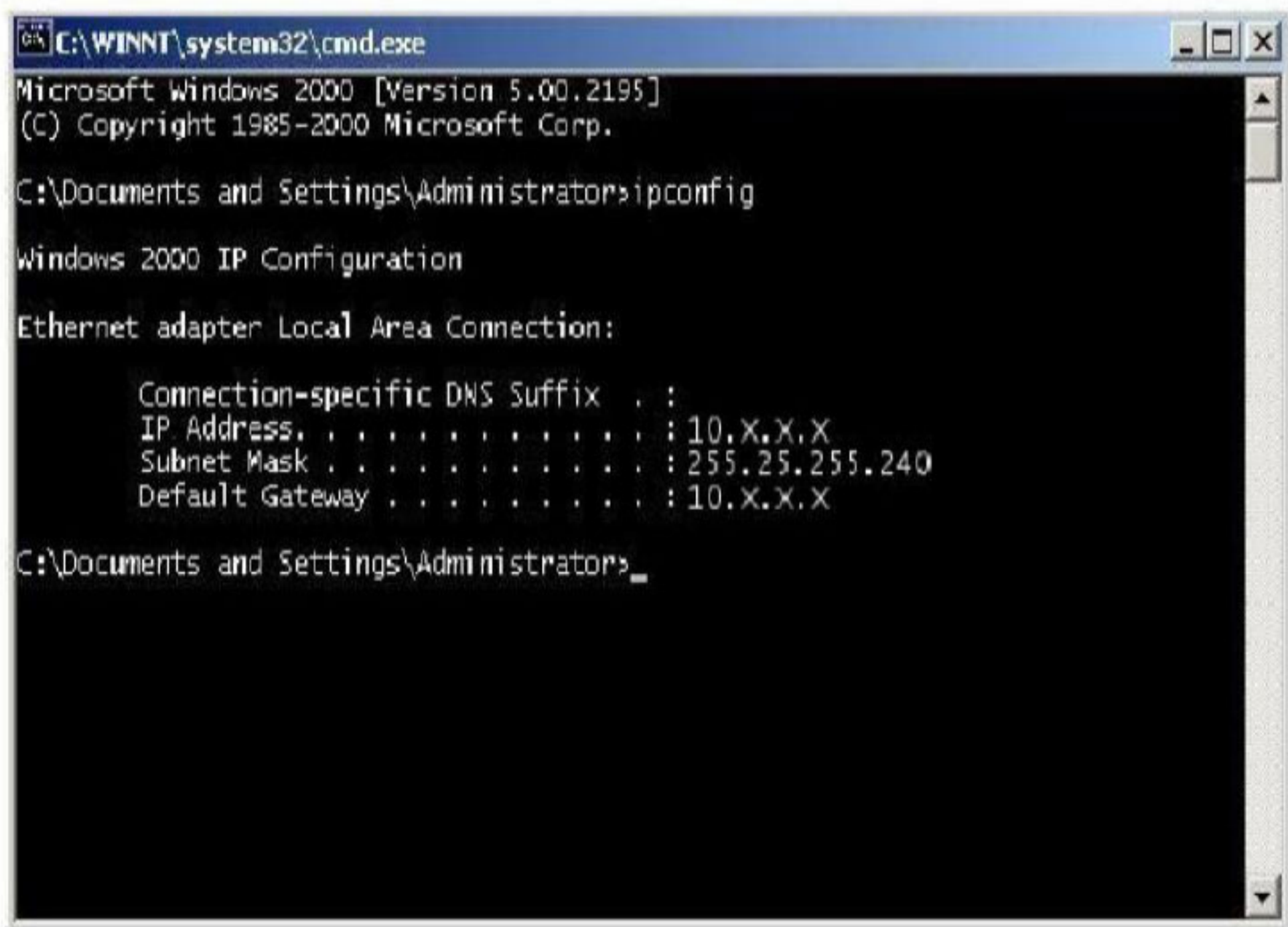
Setting up Proxy Server

How to configure a proxy server

Telkom

Proxy Server Configuration

- Click on Start and Run in Open type in CMD and click on OK
- This will launch a DOS like screen, in here type in IPCONFIG (Note down the Default Gateway)
- Once this has been noted, type exit and press enter (See Figure 8)



```
C:\WINNT\system32\cmd.exe
Microsoft Windows 2000 [Version 5.00.2195]
(C) Copyright 1985-2000 Microsoft Corp.

C:\Documents and Settings\Administrators>ipconfig

Windows 2000 IP Configuration

Ethernet adapter Local Area Connection:

    Connection-specific DNS Suffix  . : 
    IP Address. . . . .                : 10.X.X.X
    Subnet Mask . . . . .              : 255.25.255.240
    Default Gateway . . . . .          : 10.X.X.X

C:\Documents and Settings\Administrators>_
```

Figure 8

- d. Then launch Internet Explorer, and click on **Tools** and **Internet Options, Connections, LAN Settings**
 - e. Select **Proxy Server** and Click on **Advanced** under **HTTP** type in the Default Gateway
 - f. Under **Port** enter 9877 and then click on OK and all the screen's to save the changes. (See figure 9)
- ***Note – Ensure that Use the same proxy server for all protocols is not selected.

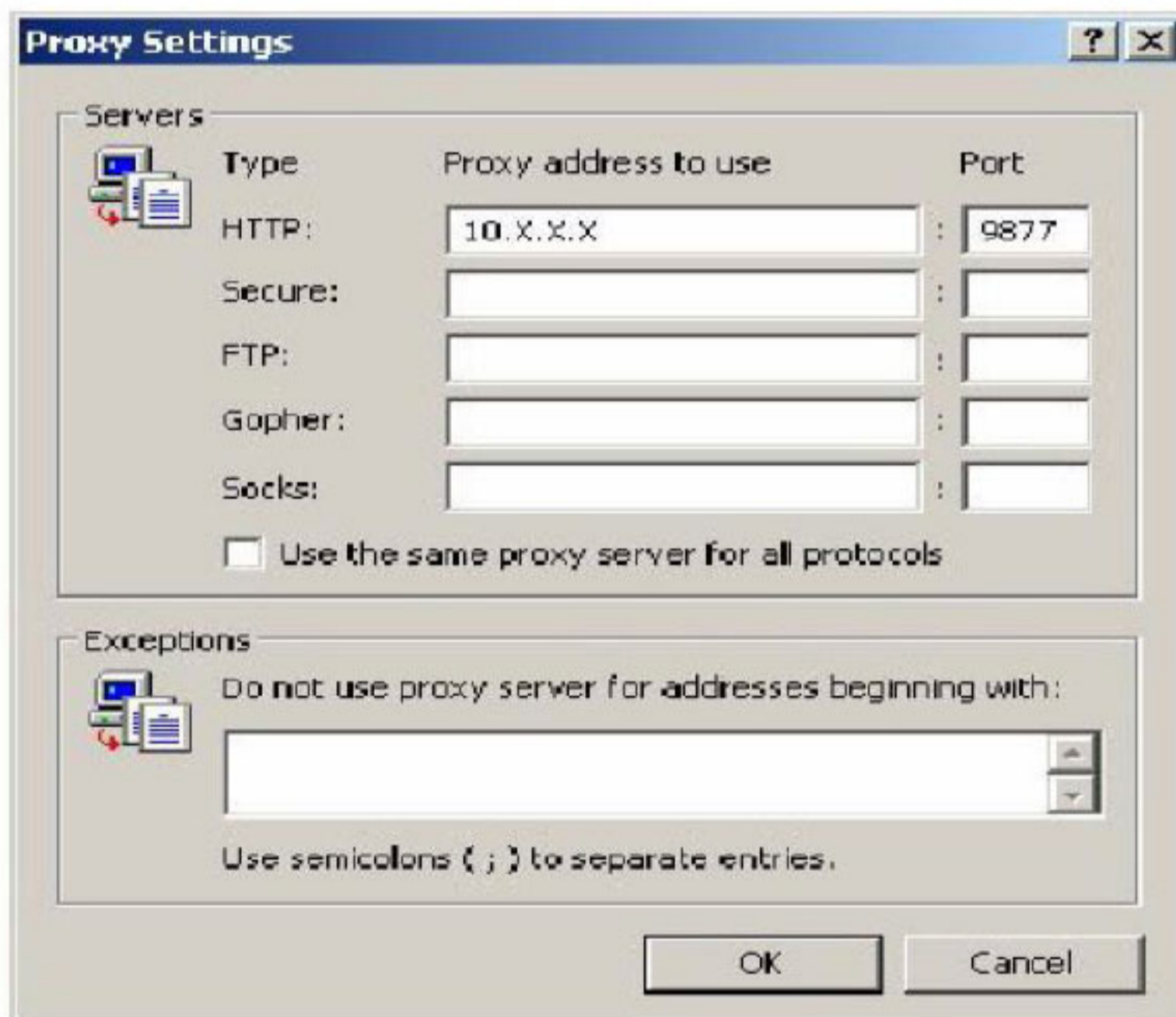


Figure 9