

HOME & BUSINESS

Wimax Configuration

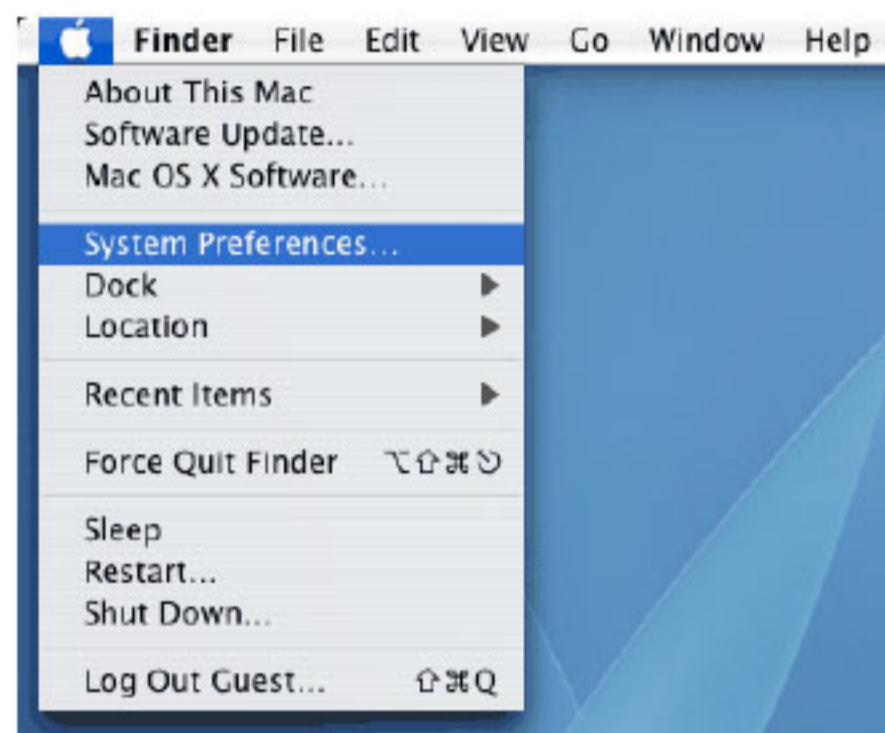
How to setup Wimax on
Mac OS X

Telkom

WIMAX configurations for MAC OS x

1.1.1 Click on the Apple menu and choose "System Preferences."

a.



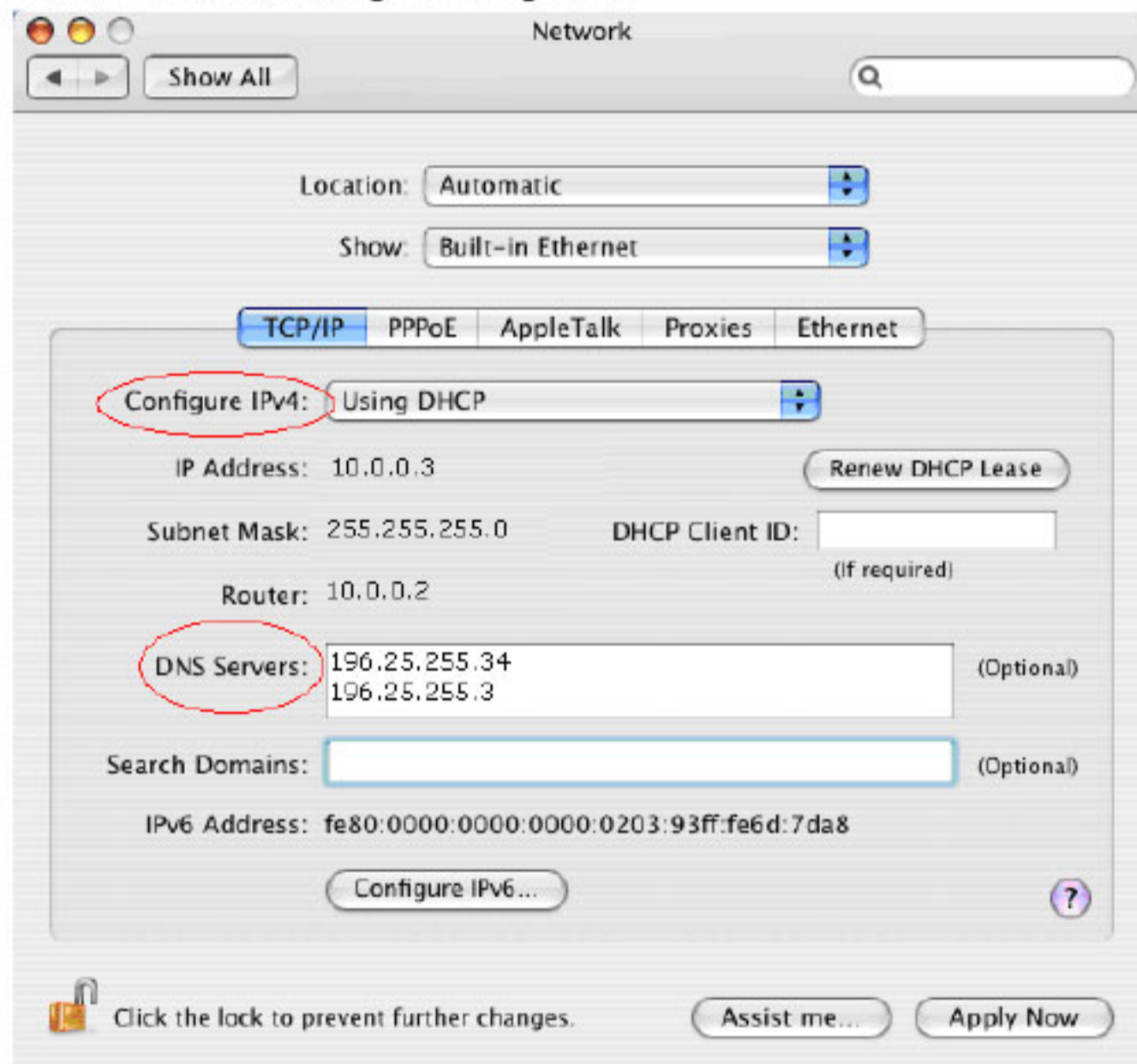
1.1.2 Click on the "Network" preference pane.



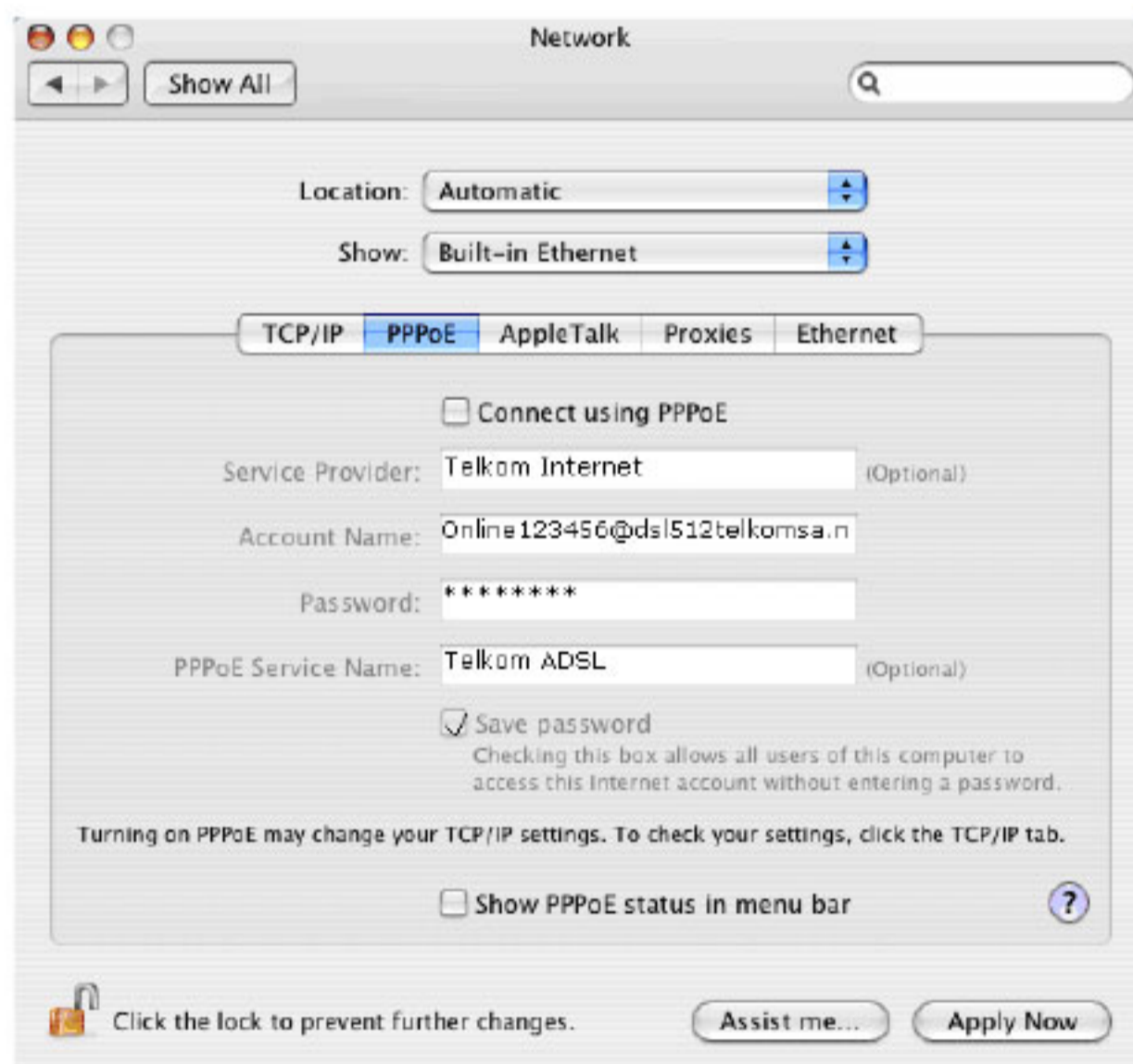
1.1.3 Now switch from the "Network Status" screen to the "Built-in Ethernet" screen by choosing "Built-in Ethernet" in the pull-down menu labelled "Show."

The first thing you'll see will be the "TCP/IP" settings.

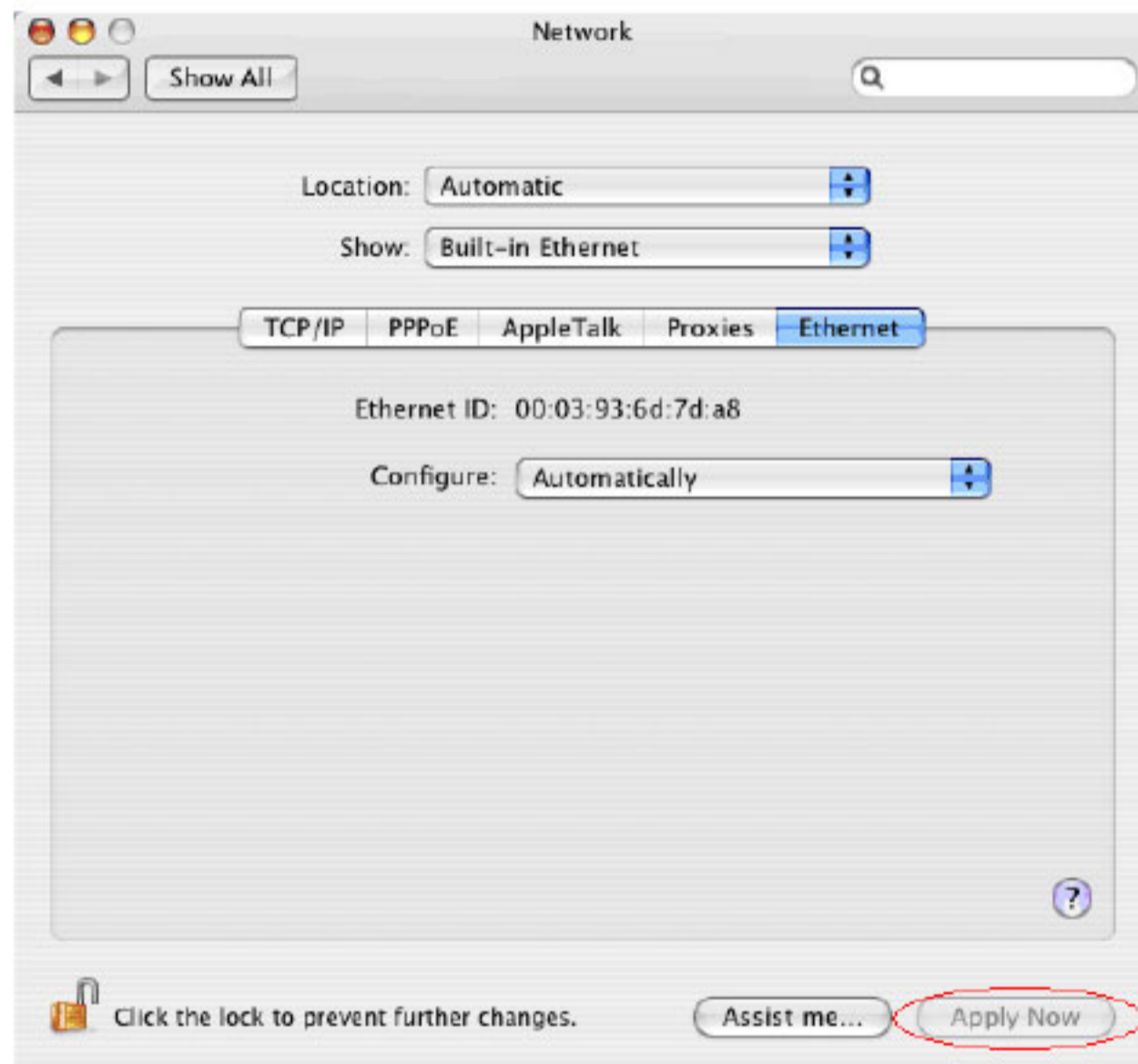
- "Configure IPv4" should be set to "Using DHCP"
- "IP address," "Subnet Mask," and "Router" will all be assigned dynamically using DHCP
- "DNS Servers" should be assigned using DHCP, but can also be set manually to "196.25.255.34" on the first line and "196.25.255.3" on the second
- "Search Domains" should be assigned using DHCP



1.1.4 Click on the PPPoE tab. "Connect using PPPoE" box is unchecked. In Service Provider, enter the name of your ISP, e.g. TelkomSA. In the Account name field and password field, type in the username that you acquired from your ISP. Type in Service provider name in "PPPOE Service Name.:



1.1.5 Click on the “Ethernet” Tab settings next. Keep this set to “Automatically”.



1.1.6 That's it, you're done! Just press "Apply Now" to save the changes you have made.