

HOME & BUSINESS

Navigation

How to navigate a website on
MS Internet Explorer

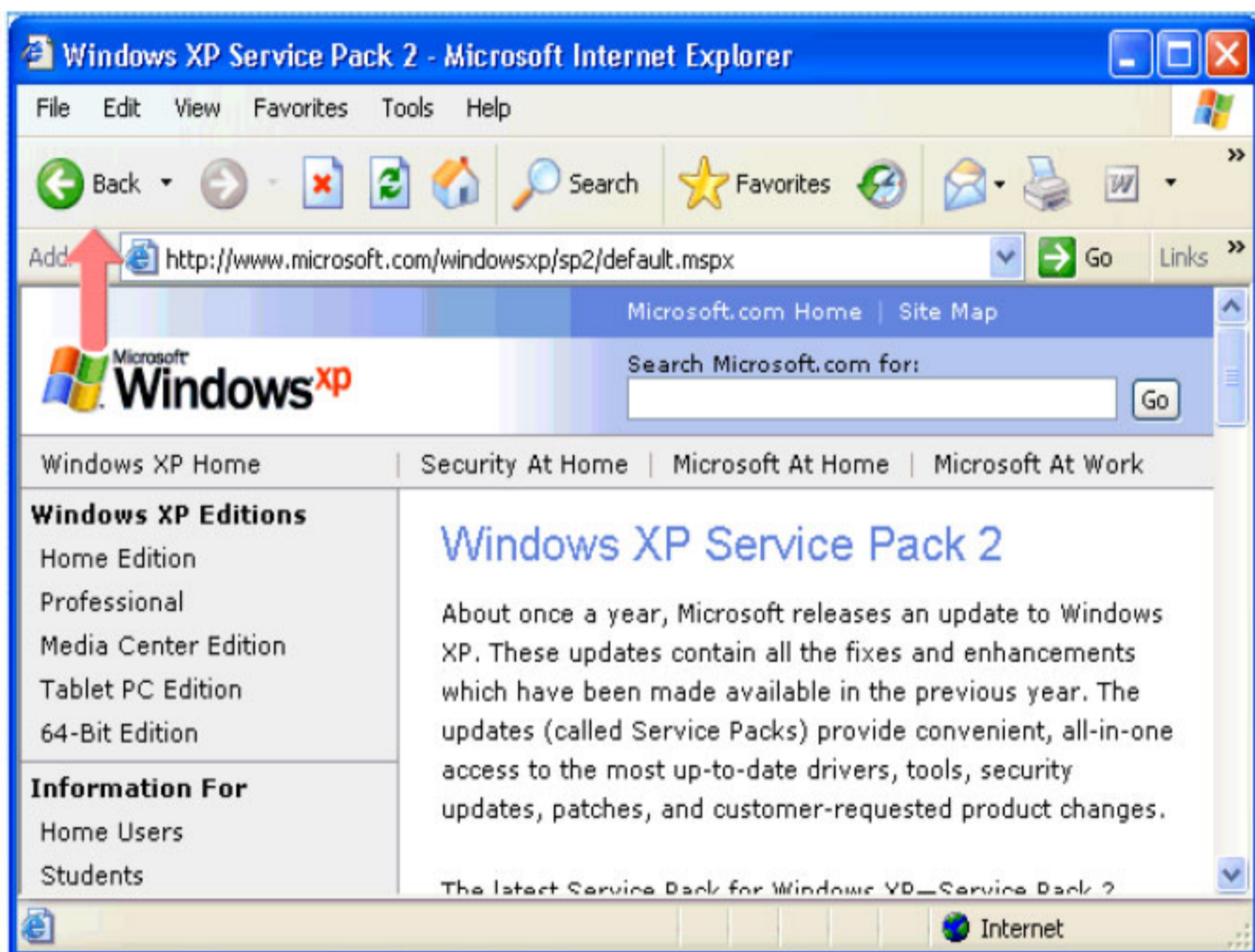
Telkom

MS Internet Explorer

Navigation

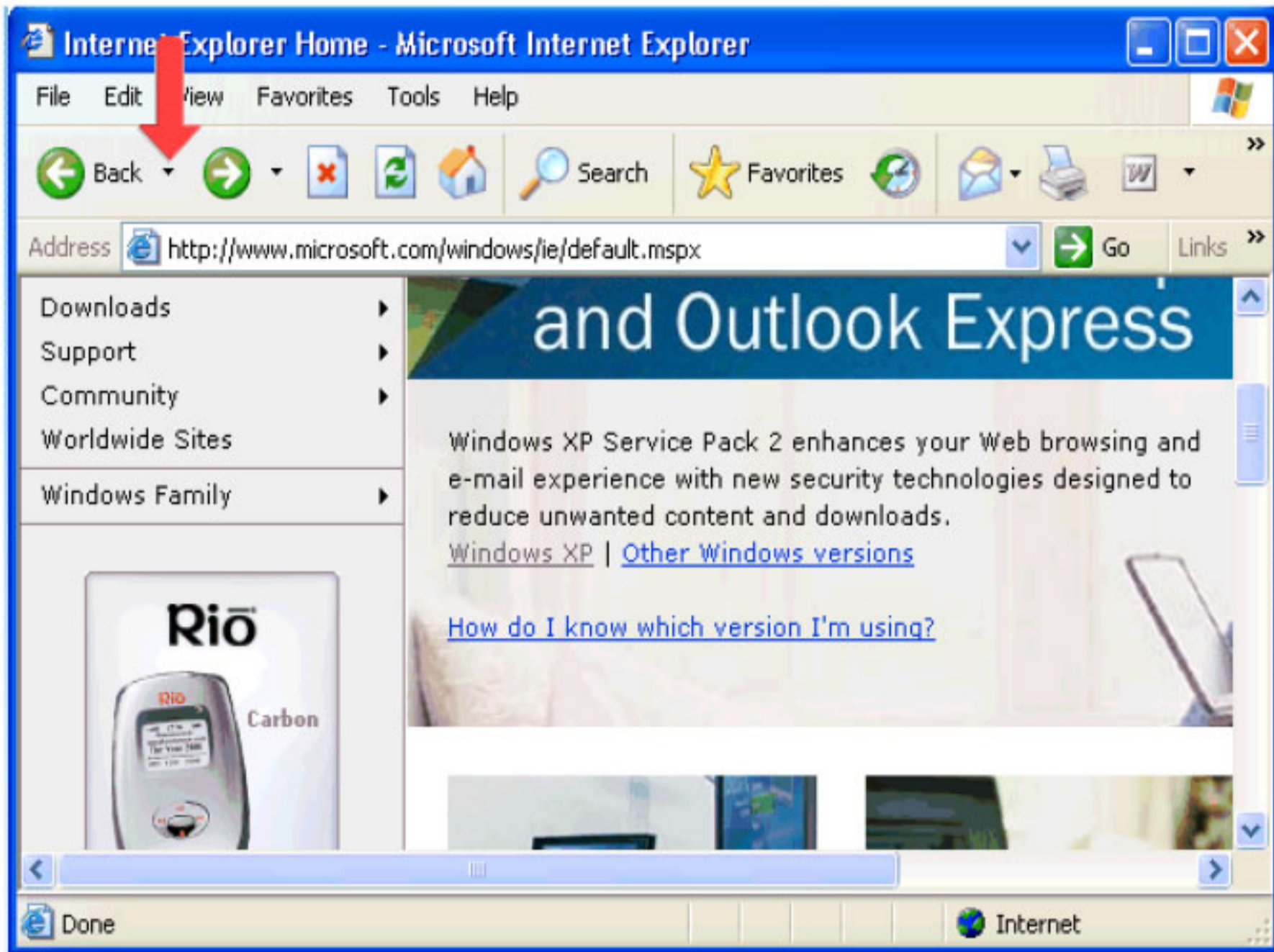
Step 1 of 5:

Click on the "Back" button.



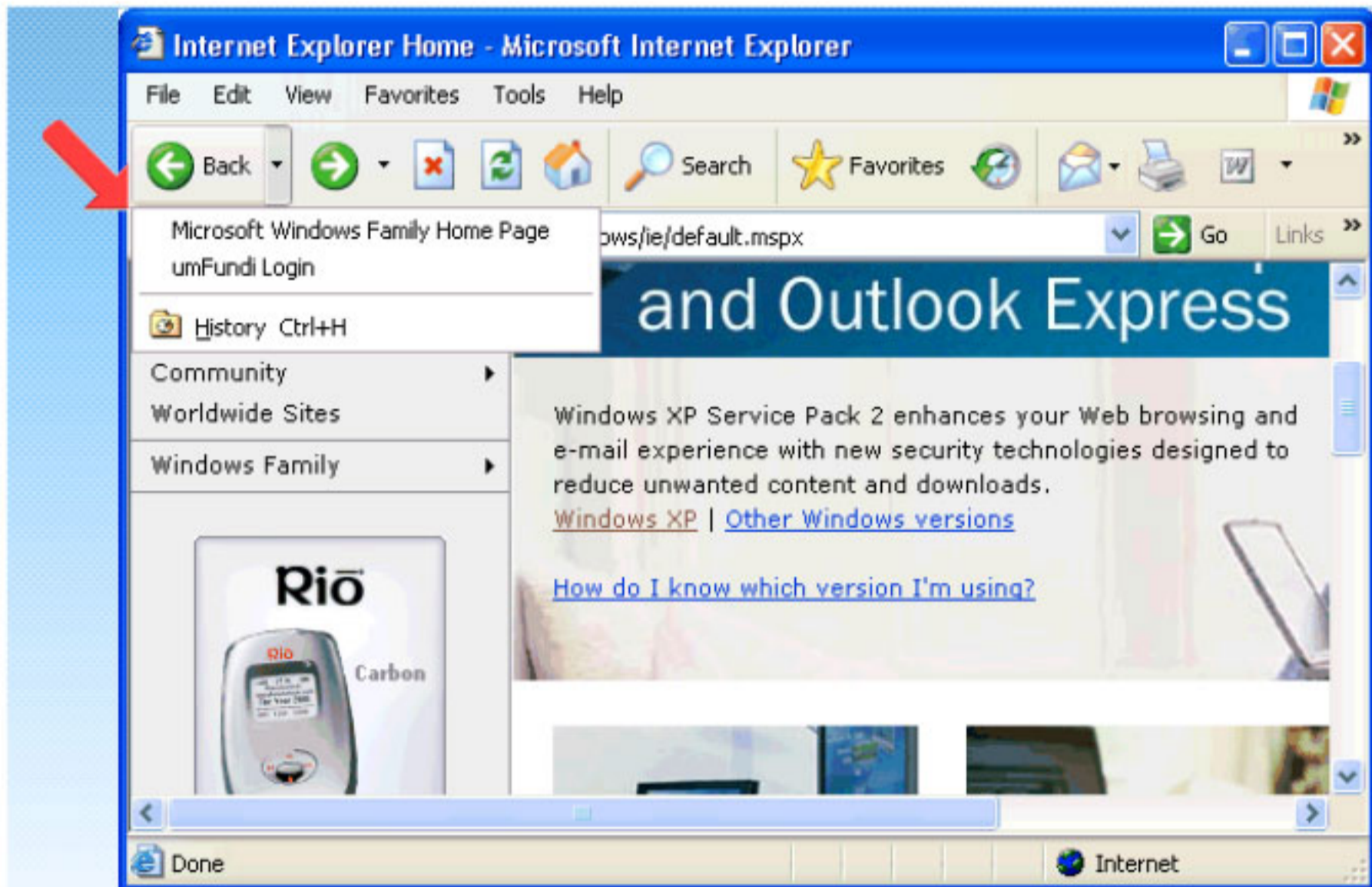
Step 2 of 5:

This will take you to the last web page visited.



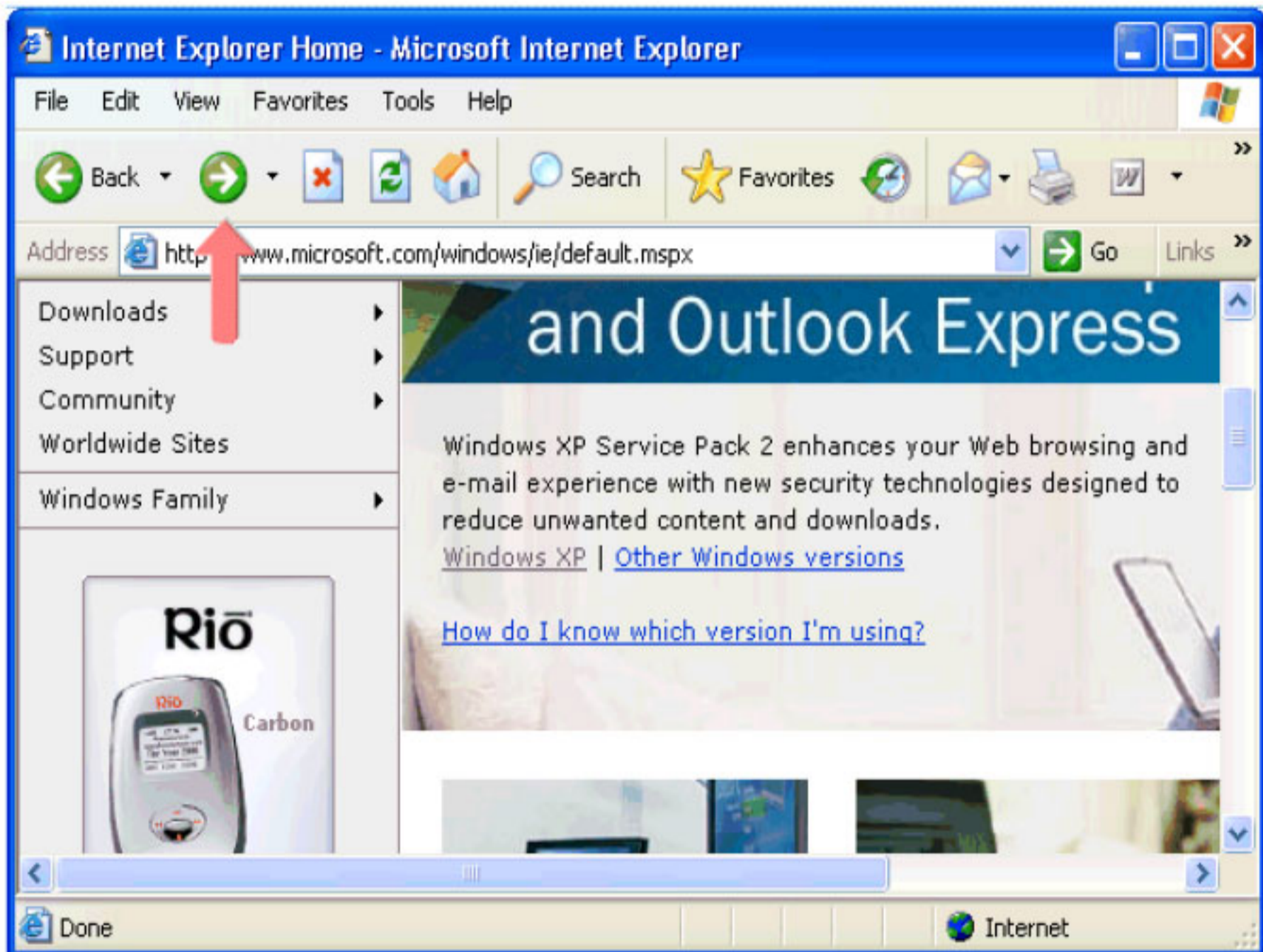
Step 3 of 5:

All previously visited web pages will be displayed.



Step 4 of 5:

Click on the "Forward" button.



Step 5 of 5:

The website will now be displayed last visited.

