

HOME & BUSINESS

Bridge mode in Windows XP

How to set up your ADSL on
Windows XP.

Telkom

Bridge mode Windows XP

1.1.1 Click Start and go to Control Panel,

1.1.2 Category View

In Control Panel Click on Network and Internet Connections
And click on Network connections

1.1.3 Classic View

In control Panel Double Click on Network Connections
In the Network Tasks section on the left, click on Create a new connection This will launch
the New Connection Wizard click on Next to continue, (See Figure 1)



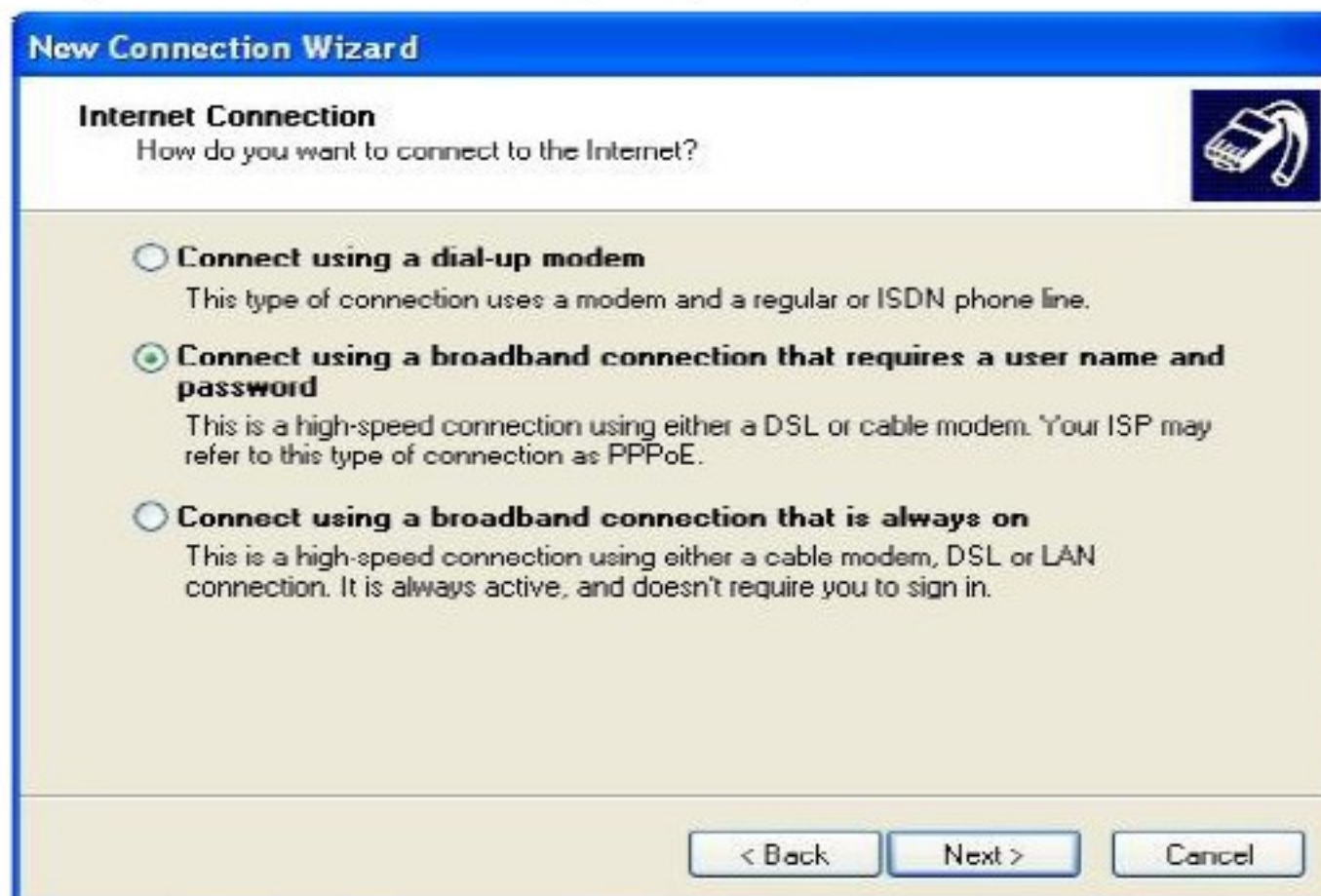
(Figure 1)

1.1.4 Network Connection Type - Select Connect to the Internet and click on Next (See figure 2)



(Figure 2)

1.1.5 Internet Connection - Select Connect using a broadband connection that requires a username and password and click on Next (See figure 3)



(Figure 3)

1.1.6 Connection Name – Type the name for the connection e.g. TelkomSA and click on Next (See figure 4)

New Connection Wizard

Connection Name
What is the name of the service that provides your Internet connection?

Type the name of your ISP in the following box.

ISP Name
TelkomSA

The name you type here will be the name of the connection you are creating.

< Back Next > Cancel

(Figure 4)

1.1.7 Internet Account Information – Type in the username and password supplied and click on Next (See figure 5)

New Connection Wizard

Internet Account Information
You will need an account name and password to sign in to your Internet account.

Type an ISP account name and password, then write down this information and store it in a safe place. (If you have forgotten an existing account name or password, contact your ISP.)

User name: TelkomDSL1234@dsl512telkomsa.net

Password: ●●●●●●

Confirm password: ●●●●●●

Use this account name and password when anyone connects to the Internet from this computer

Make this the default Internet connection

Turn on Internet Connection Firewall for this connection

< Back Next > Cancel

(Figure 5)

1.1.8 The connection is now set up click on Finish to save the settings. (See figure 6)



(Figure 6)